

# VERMEER MEGA Vacuum Excavators



EQUIPPED TO  
DO MORE.

**McLAUGHLIN**  
Providing Solutions Since 1921



## **MEGA 2000 - STAY ON THE JOB LONGER**

The MEGA 2000 skid-mounted vacuum excavator specializes in large volume potholing to keep you on the job longer. The MEGA Vac series units are equipped with a 99 horsepower Kubota diesel engine with a 1200 cfm blower and feature a 2,000 gallon spoil tank and 925 gallons of fresh water to ensure you have the power and capacity required for extensive jobs.

## **MEGA 2600 - ULTIMATE HDD SUPPORT**

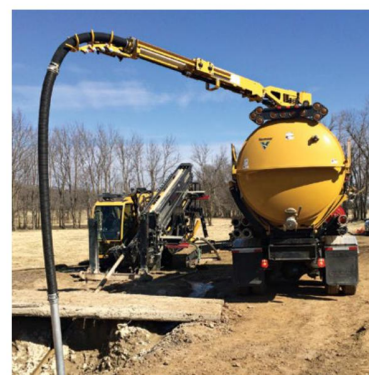
The MEGA 2600 skid-mounted vacuum excavator is designed for fluid management and HDD support for up to D100x120 class rigs and Maxi Rigs. The Mega 2600 is typically paired with PP100XT DEEP power pack providing additional suction power with the 23 inches of mercury DEEP blower for increased fluid management capabilities. The MEGA 2600 also features 300 gallons of fresh water making it a versatile potholing unit when needed.

## **PP100XT AIR - ADDED VERSATILITY**

The Air/Water Power Pack is equipped with a 99 horsepower Kubota diesel engine, 1200 cfm at 15" of mercury blower and a 185 cfm @ 100 psi rotary air compressor.

## **PP100XT DEEP - ADDED POWER**

For HDD support fluid management jobs, the PP100XT DEEP power pack features a 99 horsepower Kubota diesel engine and a 1200cfm 23" of mercury deep vacuum blower for added suction capability. The PP100XT DEEP can be added to any MEGA vac configuration.



**Optional  
Industry-leading  
Hydraulic Boom**

**Cam Over External  
Hydraulic Rear Door**



**Convenient and Easy  
to Secure Enclosed  
Hose Storage**

**Three-Stage  
Cyclonic Filtration**

McLaughlin products get your job done right every time.

**RELY ON MCLAUGHLIN.**

**300 gal of Fresh Water with  
5.6 gpm @ 3,000 psi Water System  
(410 or 925 gal Round Options Available)**



**Optional  
Reverse Flow for  
Pressure Offloading**

**Powerful 99hp Kubota  
Diesel Engine with  
Lockable Enclosure**

# Mega Vacuum Excavators

The Vermeer MEGA Vacuum Excavators from McLaughlin feature all the proven components of McLaughlin's industry-leading vacuum excavators, teamed with larger spoil tanks and big fresh water capacity. This combination provides customers with a large truck vac that is an efficient and flexible addition to their fleet.



## THREE-STAGE CYCLONIC FILTRATION

This system allows for wet and dry vacuum excavation while prolonging filter life and keeping maintenance costs low.



## CAM OVER HYDRAULIC REAR DOOR

Provides a 360-degree positive seal, even under reverse pressure without additional clamping requirements. The highly reliable Cam-Over design has no in-tank moving parts, so all maintenance is external.



## FULL TANK DUMP CAPABILITY

High lift and a 50 degree dumping angle empties solid efficiently.



## REVERSE FLOW - *Optional*

Keeps your work moving forward with the ability to offload spoil faster and clear hose clogs quickly. Simply reverse the airflow by changing the valve position for positive tank pressure.



## HYDRAULIC BOOM - *Optional*

Exclusive telescoping boom maintains hose length during extension and incorporates a remote controlled hydraulic valve for vacuum shut off. Available with manual or hydraulic rotations.



## HOT BOX - *Optional*

Allows you to work with water heated up to 165 degrees F to improve digging in frost or heavy clay.